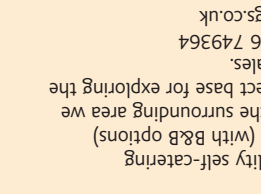




Self Catering
Kirkby Malham
Sunny apartment with views, sleeping two. Fully equipped to high standard. Walks straight from the door and to the local pub.
Telephone: 01729 830868
Email: jen@alfrescobooks.co.uk
Website: mill-top.co.uk

MILL TOP, SCALEGILL

14



Self Catering
With 4 high quality self-catering holiday cottages (with B&B options) in Malham and the surrounding area we provide the perfect base for exploring the beauty of the Dales.
Telephone: 01756 749364
www.daleslettings.co.uk

DALES LETTINGS

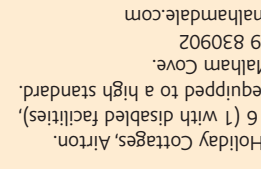
13



Self Catering
The Old Barn Cafe & Self contained flat, Malham Good home cooked food. Muddy boots always welcome. Self contained flat sleeps 4 Telephone: 01729 830486 www.oldbarmmalham.co.uk

THE OLD BARN CAFE & HOLIDAY FLAT

12



Self Catering
Town End Farm Holiday Cottages, Airton. 2 cottages sleep 6 (1 with disabled facilities). 1 sleeps 4. Fully equipped to a high standard. Views towards Malham Cove. Telephone: 01729 830902 townendfarm@malhamdale.com

TOWN END FARM HOLIDAY COTTAGES

11



Self Catering
Hill Top Cottage is a cosy 17th century cottage with traditional features in a peaceful garden in Malham village. Modern kitchen, patio, three bedrooms. Sleeps five. Telephone: 01729 830320 or e-mail: nell@malhamdale.com

HILL TOP COTTAGE, Malham

10

15 FSC MALHAM TARN FIELD CENTRE



Fantastic location high on Malham Moor, overlooking Malham Tarn. Learning Holidays. Courses for school groups. Conference venue. Bringing Environmental Understanding to All for over 60 years! Telephone: 01729 830331 enquiries.mt@field-studies-council.org www.field-studies-council.org

16 MALHAM SMITHY, Malham

Come and visit the traditional blacksmith shop in the heart of Malham, where Annabelle Bradley designs and produces hand forged pieces for the home and garden. *Commissions also undertaken.* Telephone: 07790 885979 www.malhamsmithyonline.co.uk www.annabellebradley.co.uk



TOWN END FARM SHOP & TEA ROOM



Airton, Skipton. Selling local produce – lamb, beef, pork, ham, poultry, fish, cheese, preserves, fruit and veg. Visit our Tearoom and gift shop. Closed Mondays, except Bank Holidays. Telephone: 01729 830902 townendfarm@malhamdale.com

18 PAGANUM PRODUCE

Farm to plate, Yorkshire Dales meat Free Delivery to your door in sheep's wool insulated boxes. Traditional Beef, Lamb and Pork, Bacon, Sausages, Steaks and even Yorkshire Chorizo. Church End Farm, Kirkby Malham. Telephone: 01729 830727 www.paganum.co.uk



For 10% off 1st order quote BR11



MALHAM SAFARI 2011 'Animals in Concert'

SATURDAY 28th MAY –
WEDNESDAY 1st JUNE, 2011

Come to Malham for a great family day out!

There will be a 'Treasure Hunt' style quiz and we will be counting guitars (for cash prizes). In addition there will be the usual 'Tea Room' and other activities including a 'Coconut Shy', 'Archery' and a daily 'Duck Race'.

FREE BOTTLE OF WINE if you mention this brochure when booking!!

Telephone: 01729 830301 www.tudorbells.co.uk
welcoming you.
everybody. Bob & Sheila look forward to
Company' means we have something for
a family suite and our unique 'sleepers
warm welcome guaranteed. 3 doubles, a twin,
railway station with bags of character and a
*** A delightful 19th Century converted



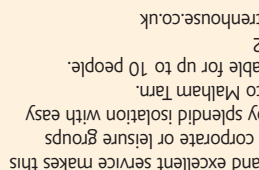
6 TUDOR GUEST HOUSE, Bell Busk



Hill Top Bunk Barn – good value self-catering accommodation for walkers, families, or groups in Malham village. Sleeps 32 in 6 rooms. Kitchen, showers, drying room. Telephone: 01729 830320 or e-mail: nell@malhamdale.com

8 HILL TOP BUNK BARN, Malham

8



Exclusive use of dedicated facilities with outstanding food and excellent service makes the ideal place for corporate or leisure groups from 6 to 26. Enjoy splendid isolation with easy access and views to Malham Tarn. Self-catering available for up to 10 people. Tel: 01729 830322 Email: info@high-trenhouse.co.uk

7 HIGH TRENHOUSE, Malham Moor

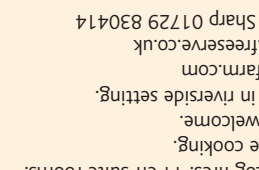
7



*** Victorian Country House guest accommodation on the Pennine Way, with breakfast and dinner wards by the A.A. Deliciously Yorkshire food member. 8 en-suite letting rooms, wood burning stove in the lounge bar. Midweek breaks available. Telephone: 01729 830315 www.riverhousehotel.co.uk

6 RIVER HOUSE, Malham

6



Private parking. Log fires. 11 en-suite rooms. Family run. Home cooking. Pets and groups welcome. Beautiful garden in riverside setting. www.miresfield-farm.com chris@miresfield-reserve.co.uk Telephone: Chris Sharp 01729 830414

5 MIRESFIELD FARM GUESTHOUSE

5

MALHAM SHOW

AUGUST BANK HOLIDAY SATURDAY – ALL DAY FROM 9.30am



HORSES, CATTLE, SHEEP, LOCAL ART, PRODUCE AND HANDICRAFTS. FAMILY ATTRACTIONS, CHILDREN'S SPORTS, FELL RACE & MOUNTAIN BIKE TRAILQUEST.

TRADE STANDS, CATERING AND FARMERS MARKET.

"A GREAT DAY OUT FOR THE WHOLE FAMILY"

See www.malhamdale.com for more details

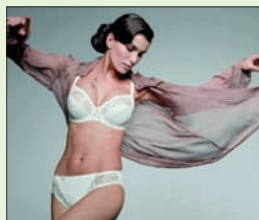
THE CONISTON HOTEL, Coniston Cold



Where a true Yorkshire welcome awaits you. Enjoy delicious food prepared from local produce in Macleod's Restaurant. Learn about and fly Falcons, Eagles, Owls and Hawks at The Coniston Falconry Centre. Booking essential. Telephone: 01756 748080 e-mail: info@theconistonhotel.com www.theconistonhotel.com

THE LINGERIE ROOM

As a specialist lingerie boutique, we have an extensive range of exquisite lingerie, nightwear, swimwear, hosiery and a good range of men's underwear. We offer a personal fitting service and have something for everyone, whatever your age, size or style. The Lingerie Room. 6 High St, Settle. Telephone: 01729 825566 www.lingerie-room.co.uk



www.malhamdale.com

THE "DON'T MISS" SITE FOR NEWS, INFORMATION, EVENTS AND ALL THINGS TO SEE AND DO IN MALHAMDALE.

Keep abreast of what's going on in Malhamdale – information constantly updated.

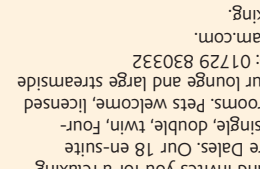
Published by the Malhamdale Initiative © 2011

Most photographs: Peter Sharp, Malham Original Design: David Lightfoot, Rylstone
Main Map Illustration: Peter Kempplay, Stainforth
Updated & Printed by Briggs Colour Printers, Canonley.



4 LINDON GUEST HOUSE, Malhamdale, Airton

Converted barn with panoramic views. Lounge with open fire, separate dining room, evening dinner optional. Full central heating. All bedrooms have en-suite facilities. TV, tea and coffee tray, hairdryers, shaver points. Fire certificate. Licensed and private parking. Telephone: 01729 830418 lindonguesthouse@googlmail.com www.lindonguesthouse.co.uk



3 BECK HALL, Malham

18th Century Beck Hall is run by the Maule family and invites you for a relaxing stay in the Yorkshire Dales. Our 18 en-suite bedrooms include single, double, twin, four-poster and family rooms. Pets welcome, licensed with a log fire in our lounge and large streamside gardens. Telephone: 01729 830332 www.beckhallmalham.com. Instant online booking.

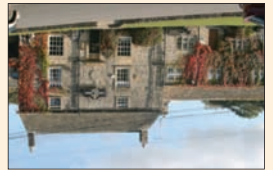


2 VICTORIA INN, Kirkby Malham



Granville and Staff wish you a warm welcome to the Victoria Inn, Kirkby Malham. Traditional Ales, Bar Meals served Luncheon and evening Small parties catered for. Telephone: 01729 830499

1 LISTER ARMS, Malham



*** 17th Century Inn tucked right in the heart of the picture-postcard village of Malham. The views are unbeatable as is our attention to detail. Enjoy locally sourced food, award-winning real ale and beautiful cosy rooms. We are the perfect start and end to your day. Telephone: 01729 830330 Email: info@listerarms.co.uk www.listerarms.co.uk

"I won't know for sure if Malhamdale is the finest place there is until I have died and seen heaven (assuming they let me at least have a glance), but until that day comes, it will certainly do."



Bill Bryson, author and former Malhamdale resident.

Welcome to
Malhamdale
in the Yorkshire Dales

FREE WALKS MAP & DIRECTIONS INSIDE

"Why not linger longer in the friendly dale"



For all you need to know for your visit – visit our website www.malhamdale.com

SELECTED WALKS IN MALHAMDALE

For up-to-date route information visit www.malhamdale.com

INTRODUCTION

Malhamdale offers some of the best walking among some of the finest scenery in the British Isles. The terrain, however, must not be taken for granted and walkers must be adequately prepared, and, in particular, must be properly shod. Proper walking boots giving adequate ankle support are essential for this area as, although some of the most popular paths are now surfaced almost to town centre standards, most paths are uneven if not actually rough. Trainers, for example, are not adequate for most of the walking in the area.

It should also be noted that the limestone of which the spectacular scenery of Malhamdale is composed can be a testing surface on which to walk, and great care must be taken especially when the limestone is wet or has a rime of mud on it when it becomes very slippery.

That having been said, the delights of the walking in Malhamdale are self-evident. A pause for breath at almost any point on any of the walks described here will give the opportunity to look around at some of the most breathtaking scenery you are ever likely to come across!

The backbone of walking in Malhamdale is the Pennine Way which is shown on this map as a broad dotted green line heading more or less North-South. All of the walks described here use the Pennine Way for some part of their journey. Where this is the case the Pennine Way is not overlaid on the map by the appropriate route colouring. The walks described all start and finish at the Yorkshire Dales National Park Authority car park in Malham.

WALK 1

MALHAM LANDSCAPE SPECTACULAR

7.125 kms (4.5 miles)

Turn left out of the YDNPA Car Park and follow the road through the village. By the last building pass through the hand-gateway on the right to follow the well-made and well used footpath, part of the Pennine Way, to Malham Cove. On approaching the Cove, continue straight ahead to gain a view which gives a striking impression of the grandeur of the feature. Back-track to the footpath junction and turn right to follow the path which climbs steeply up the western end of Malham Cove. The path has been stepped for much of the climb. At the top follow the path to the right crossing the limestone pavement. [*] At the far side of the pavement leave the Pennine Way (which veers to the left) and continue ahead and then to the right on the Pennine Way uphill towards the corner of a wall. Continue with the wall on your right for about 250 metres when you will encounter a road which you should cross, going downhill for a few metres to a gate on your left. The path proceeds slightly downhill to pick up the corner of a wall which it then follows, passing a barn on your right. The path turns right and passes through a gate. Cross the field to the stile, after which the path leads downhill until it reaches the road. Turn left along the road, crossing a small bridge, to a gate on your left giving access to Gordale Scar. Pass through the gate on your left and follow the path into the gorge of Gordale Scar – a spectacular demonstration of the power of the natural elements. Retrace your steps back to the road, turn right and continue along the road for about 100 metres to access the footpath on your left to Janet's Foss, an attractive waterfall. Continue past the waterfall as the path follows the Gordale Beck (on your left hand side) through the wooded gorge, carved out of the limestone by the Beck, passing through two gates and out into the fields on the floor of the valley. Follow the surface path through another four gates, keeping the river on your left. After passing a barn on the left, the path meets the junction with the Pennine Way where you should turn right, immediately passing through the first of three gates.

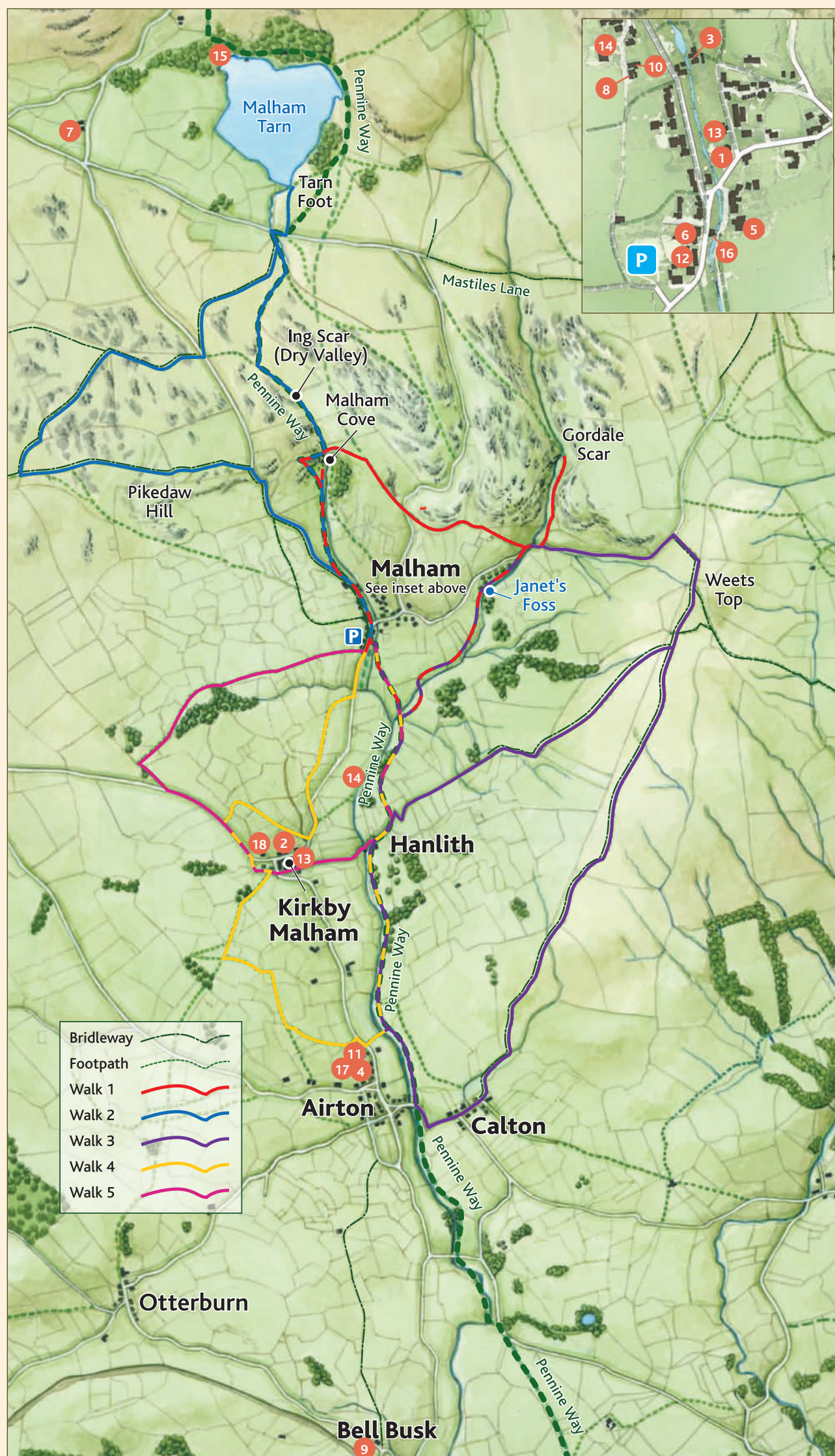
As you come back into the village, turn left over the clapper bridge, cross the road by River House and follow the road to the left to return to the Car Park.

WALK 2

MALHAM COVE, DRY VALLEY, MALHAM TARN AND PIKEDAW

12.25 kms (7.6 miles)

Follow the route of Walk 1 as far as the top of Malham Cove, indicated by the symbol [*]. After crossing the limestone pavement, turn left and cross three stiles as you walk up through dry valley. After crossing a fourth stile, take the right fork in the path. Your path leads past the area, on your right, where the stream flowing from Malham Tarn sinks underground, emerge at the foot of Malham Cove. Turn right onto the road, crossing the stream before taking the footpath on the left by the small car parking area and following the path to Tarn Foot, where lovely views can be had of Malham Tarn and its surroundings. Retrace your steps back to the road turning right onto it and crossing the stream again. Turn left off the road onto the Pennine Way, this time taking the broad track (bridleway) which curves to the right around the hillside (leaving the Pennine Way), and bears left after passing through a gateway to lead up to a road. Bear left along the road for a few metres and, immediately after the cattle grid at Langscar Gate, turn right through a field gate on to a broad, well defined track which leads uphill, curving to the right. Turn left once through the next gateway, and follow the path, still well defined, uphill through other gateways until you reach the junction with the Malham to Settle bridleway where there is a prominent finger-post beside a field gate. Turn left through the field gate, and bear right off the main bridleway on to a route through access land which passes on your right the remains of spoil tips associated with the former mining activity in the area. Follow the path until it appears to be about to plunge steeply downhill at a point where a less well-defined footpath crosses at right angles.



Turn left on to the crossing footpath, but not before you have paused to take in the spectacular view across Malhamdale and down the Aire Valley beyond Kipton. Continue along the footpath, passing a limestone outcrop, until you regain the bridleway. Turn right on to the bridleway and follow it downhill until it joins the Cove Road at a gate. Turn right and follow the road downhill. After a kilometre or so you will pass the point at which the path you took to Malham Cove takes off, on your left. Follow the road back through the village to your starting point.

WALK 3

JANET'S FOSS, WEETS TOP, CALTON, AIRTON AND HANLITH

Full route 13 kms (8 miles)

Shorter route 8.6 kms (5.3 miles)

Turn left out of the YDNPA car park, cross the road by River House to cross the clapper bridge behind the blacksmiths, turn right on to the Pennine Way and follow it to the third gate. Immediately after the gate leave the Pennine Way turning left on to the path sign-posted to Janet's Foss and follow the surfaced path through five gates alongside the Gordale Beck, through the wooded gorge and past Janet's Foss to the road. Turn right along the road and follow it (steeply) uphill until, just below the crest of the road, a walled, rough track is sign-posted to

the right. Take the track to Weets Top and pass through a gate, adjacent to which are the remains of an ancient wayside stone cross, on to the open moor. Just beyond the gate where the surfaced bridleways fork, take the right hand route signed to 'Calton 2¾ miles'. Follow the footpath downhill for about 450 metres at which point the track from Hanlith joins.

If you wish to follow the shorter route, bear right and follow the waymarked track downhill over the open moor. After about 1100 metres the track passes through a gate and continues as a lane between two walls (Windy Pike Lane). Just over 1200 metres further on, the track acquires a tarmac surface as it descends steeply into the hamlet of Hanlith. On the second of the downhill hairpin bends look for the signpost to the right for the Pennine Way, and follow the Pennine Way back into Malham.

For Calton, continue gently downhill following the bridleway across the open moor, taking in the splendid views of Malhamdale and beyond, and after 3.25 kilometres (2 miles) you will descend quite steeply via a zig-zag track into the wooded Foss Gill. Here the track runs beside the beck, crosses a ford and rises slightly between stone walls to enter the hamlet of Calton. Turn right down the road and continue ahead, following the road down and around a right angled bend to the river bridge below the village of Airton. Before crossing the bridge turn right down a short track and over a stile to pick up the Pennine Way footpath. On the opposite side

of the River Aire you will see a former mill building (now converted into residential accommodation), which serves as a reminder of the hidden industrial past of this and similar rural areas. The Pennine Way continues alongside the river, and after passing left through a stile and three gates, crosses a wooden footbridge over a stream. (Your route now turns right, however, if you want refreshments the second footbridge ahead gives access to 'Town End Farm Shop and Tearoom'). Turn right after the first footbridge, keeping the main river on your left. Follow the Pennine Way to Hanlith Bridge, turning right over the stile and follow the road steeply uphill to the right-hand hairpin bend. On the left at the apex of this bend the signpost indicates the continuation of the Pennine Way to Malham. Follow the path, now somewhat up the hillside from the river, passing through five gates, which will return you to the point at which the path to Janet's Foss turns off, on which you started this walk. Continue along the Pennine Way and re-cross the clapper bridge as you enter Malham to return to the Car Park.

WALK 4

MALHAM, KIRKBY MALHAM, AIRTON, HANLITH

9 kms (5.6 miles)

Turn right out of the YDNPA car park, and walk up the road for 320 metres until you cross a stile

on your right, signposted to Kirkby Malham. The footpath is not very distinct in the field you have now entered so aim towards the left of the hummock in front of you, going diagonally up hill, crossing the farm track and over the stile. Continue along the edge of the field, keeping to the fence which bends to the right, on your right hand side, until reaching the corner of the field where there is another stile. Follow the path slightly downhill to another stile. Cross the next field to a stone stile to the right of a field barn, after which bear slightly right to cross the field to another stone stile set to the right of a large tree. Cross the field to another stone stile and then bear slightly left to reach a field gate, before turning right onto the road. Follow the road for 300m before turning right onto a track signposted 'Footpath'. After 100m turn left at the footpath finger-post to 'Cow Close Lane'. Cross the stile to follow this path, keeping a stream bed to your left towards a field gate which appears to the left of a disused small quarry. Once through the gate continue ahead, curving round to the left in front of a farm house (New Close) and crossing a stile to climb slightly uphill to the right to access the farm track. Turn left along the track and follow it to Cow Close Lane, where turn left again and go downhill to Kirkby Malham. At the commencement of the village houses turn right to follow the roadway to the front of the parish church. (If refreshment is needed at this point the Victoria Inn is about 75 metres ahead.) In front of the church, by a parking/turning area, follow a signpost for the footpath to 'Otterburn 2¾ miles' over a footbridge and up some steps through two gates. Turn to the right, uphill, to cross a stone stile, and then bear left to cross another stone stile at the lower left corner of a small plantation. Continue uphill keeping the small plantation on your right. Cross the farm track and over the stile into a field and navigate diagonally left over the crown of the field down to a stone footbridge alongside Deepdale Plantation. Uphill and slightly right will bring you to a stile in the right hand wall, adjacent to a field gate. Cross the stile and turn left, following the wall on your left uphill to a handgate on your left signed to 'Airton ½ mile'. Through this gate, the path drifts slightly left, down hill to Deepdale Barns where, after passing through the field gate, look for the stile (with a 'Footpath' finger-post) over the wire fence on your right, the stile being to the left of another field gate. Bear left around the corner of the field wall, and, before reaching the gateway ahead, turn right to follow a more distinct footpath along the wall side and over stone stiles. Immediately after the third stile, follow the fork in the path diagonally to the left which picks up another field wall on your left. Follow this footpath through a stile, three gates and another stile, the last one of which drops you into the main road along the valley. Turn right to follow the road slightly uphill for about 70 metres. Here a footpath on the left through a gate is signed to 'Malham 2½ miles'. (If refreshment is required at this point continue along the road for another 50 metres for Town End Farm Shop and Tea Room at Airton.) Follow the footpath down to the footbridge over the infant River Aire, cross the bridge and walk ahead towards another footbridge but turn left before the second bridge to follow the Pennine Way as it follows the riverside to Hanlith Bridge. Turn right on to the road and continue uphill through the hamlet to the acute right-hand bend of the road, from the left of which the Pennine Way continues up the valley to Malham. On entering the village turn left over the stone clapper bridge, cross the road and return to the starting point.

WALK 5

MALHAM, HANLITH, KIRKBY MALHAM, ACCRAPLATTS, MALHAM

5.9 kms (3.65 miles)

Turn left out of the car park, cross the road by River House, cross the stone clapper bridge and turn right to follow the Pennine Way to Hanlith. On reaching the road to Hanlith, turn right down through the hamlet and continue ahead over Hanlith Bridge into Kirkby Malham. At the junction with the main road cross straight ahead, passing (or not!) the Victoria Inn and the parish church on your right, and curving to the right. At the junction with Cow Close Lane, turn left (towards Settle) and proceed uphill for just under a kilometre. Where the road bears about 30 degrees left a farm track continues ahead (stile on the left of the gateway) signed to 'Malham 1½ miles'. (This gateway is the one referred to in the last pages of Bill Bryson's "Notes from a Small Island" from which he took his last look at Malhamdale.) Go ahead along the track to turn right as directed by a footpath finger-post, over a stone stile and downhill across the field to another stone stile, and continue downhill, passing to the left of a ruined barn to a wooden step stile which gives access to a footbridge over the beck in a wooded gully. Cross the next field keeping the modern farm buildings about 50 metres to your left, to a ladder stile. Cross the stile and continue with the wall on your right to Ploughleys Barn. Cross the next ladder stile, and follow the track as it curves to the right behind the barn and through a gateway into the next field. Bear slightly left as you head down through the field (no longer a track) to a fingerpost directing you onto another farm track. Follow the track as it slopes down to meet the main road, turning left before the road into the car park.

Mapping information based on the Ordnance Survey – Outdoor Leisure Map 2. Crown copyright 2005. All rights reserved.